

EASY SHINE

Waterless Wash & Wax 1 Step

Description :

Easy Shine is a waterless wash & wax cleaner and polish that contains natural waxes and hydrophobic polymers based on the famous "Sun-Guard" that provides durability on its glossy finish.

Easy Shine can be applied on all surfaces of common vehicles. Buffing the applied product on the surface will not generate any streak or scratch. Ideal for cleaning insect spots on windshield and body.

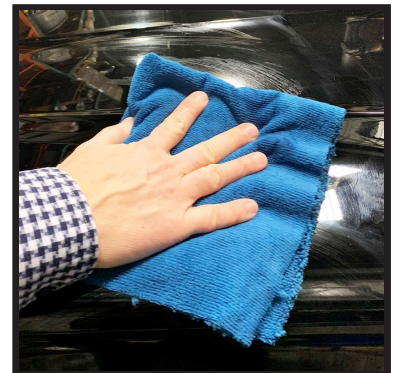
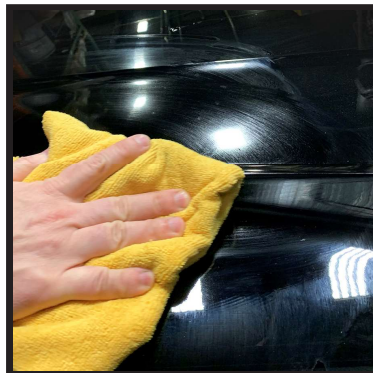
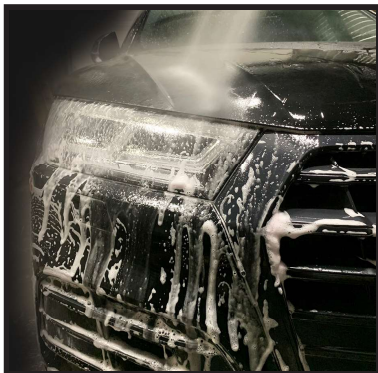
For vehicle covered with dirt, grime and road film, we recommend to wash the vehicle with Auto-Chem "Ultra-Brite".

Advantages :

- Waterless cleaner and polish, no need of water.
- Quick and easy-to-apply.
- Removes bug stains from windshield and car body
- Cleans and protects with a wax in one operation.
- Will not generate any scratch or streak on the surface while cleaning and polishing.

Instructions :

Apply on a dry, warm surface, better to work in a shaded area, not in direct sunlight. Spray the product on cloth and clean area of square meter at the time, wipe surface while it is wet. Do not let the product evaporate but wipe the area clean and dry with a "Terry Cloth" until a slight haze appears. Buff the remaining trace of haze until the gloss develop with a clean Micro fiber to attain cleanliness and shine. Use different cloths for the upper and lower parts to avoid scratching the finish..



n° 641-016 6 X 500ml Box n° 641-032 6 X 950ml Box n° 642-01 4 X 3,78lt Box n° 642-05 1 x 18,9lt Pail